

# CASTING CONNECTION

• Your Link to Investment Casting News from Ransom & Randolph •

## Inside this Issue:

- Suspenda Slurry™ material 1
- Slurry Viscosity Control 1
- Meet the Team—Danks 2
- Slurry Viscosity Control 2
- RTV2 silicone rubber 3
- Meet the Team—Lett-Davis 3
- R&R Team Who To Call 4

## New Ready-to-Use Slurry

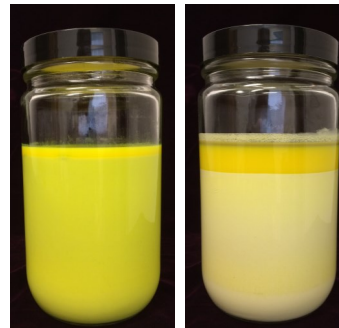
### Introducing SuspendaSlurry™ material

R&R is pleased to announce the launch of SUSPENDASLURRY material, a ready-to-use ceramic shell slurry.

Developed to eliminate costs associated with continuous mixing and to simplify the initial mixing process, SUSPENDASLURRY material's pre-mixed, chemically suspended ceramic shell slurry eliminates the need to weigh and mix binder and refractory components.

Available from R&R's Maumee, Ohio

manufacturing plant, SUSPENDASLURRY material is available in 50 pound or 300 pound



*Pictured (left to right):*

**SUSPENDASLURRY material After Sitting for Three Weeks**

**Standard Primary Slurry After Sitting for 24 Hours**

slurry buckets (stuccos are sold separately).

Based on R&R's leading primary binder technology, using SUSPENDASLURRY material allows casters added benefits over standard colloidal silica shells: such as stronger layers; reduced buckling, lifting or cracking defects; and simplified slurry maintenance.

Visit us at [www.ransom-randolph.com/binders.html](http://www.ransom-randolph.com/binders.html) to learn more.

To order material, please contact your R&R Regional Manager or customer service at 800.253.4502 today!

## Primary Slurry Viscosity Control

For primary slurries, the key slurry test parameters are binder solids and viscosity. Other slurry tests, such as density and pH are important and provide a more complete representation of a slurry's composition. However, basic slurry control can be accomplished with

viscosity and binder solids.

In most cases, binder solids tests are not available at every viscosity test. When water additions are made to bring the binder solids range into control, it should be assumed that binder solids are OK. A

good rule of thumb is that all liquid additions to the slurry between binder solids tests will be water, unless binder solids are in range and viscosity is still high.

Use a slurry log to record all test results and additions to a slurry. By carefully analyzing this

• Continued on page 2 •



*Investing with Innovation™*

# Meet the Team



Leslie Danks  
Customer  
Service Rep

Leslie Danks, Customer Service Representative, joined the R&R team in June 2012.

Leslie's role at R&R encompasses processing orders received via phone, fax, web store and email, as well as helping customers with shipping issues, returns, etc.

When asked why she wanted to join the R&R team, Leslie said, "I liked

the fact that most of the employees had worked here for a long time; which made me think that this must be a good place to work!"

Prior to joining the R&R team, Leslie worked as a Customer Service Representative at Amsted Rail, where she managed accounts for foreign and domestic rail car builders and class 1 rail roads.

In her spare time, Leslie enjoys golfing, tennis and running/walking. She is an avid St. Louis Cardinals baseball and Notre Dame Fighting Irish football fan and loves spending time with her husband, 17 year old daughter and 14 year old rescue dog.

Leslie's favorite quote is "If you don't like something, change it. If you can't change it, change your attitude."

# Viscosity Control

• Continued from page 1 •

log, you can determine the proper daily water addition. This is done by determining the viscosity and water/refractory addition effect on slurry properties.

The following chart can be used to determine what additions are required to bring a slurry back into a workable range.

Test Results		Required Additions		
Viscosity	Binder Solids Test	Water Required?	Binder Required?	Refractory Required?
Low	OK	No	No	Yes
Low	High	Yes*	No	Yes
Low	Low	Evaporate	No	Yes
OK	OK	No	No	No
OK	Low	Evaporate	No	No
OK	High	Yes	No	Maybe**
High	OK	No	Yes	Maybe**
High	High	Yes	Maybe**	Maybe**
High	Low	Evaporate	Yes	No

\*Add water to bring binder solids in range and then add refractory to bring viscosity into range.

\*\*Maybe indicates that this addition may be required based on the effect that the addition marked as a Yes has on the slurry.

# RTV2 Silicone Rubber



Ransom & Randolph offers a full range of silicone rubber, room temperature vulcanized (RTV2) materials, for model and mold making.

RTV2 silicone rubber is ideal for use in mold making applications including: rapid prototyping, jewelry, glass art, art sculpture, and concrete molding.

## WHY USE RTV2 SILICONE RUBBER?

- High dimensional stability over time
- Easy to use
- Most stable polymers available, offering superior reliability
- Vulcanization time can be adjusted, allowing flexible application
- Suited to polyurethane casting materials
- Products are non-toxic
- 1:1 mixing ratio formulas provide easy mixing
- 10:1 mixing ratio formula for transparency

At R&R, we recognize that every caster is different and what works for one may not work for another. That's why we offer RTV2 silicone rubber in numerous options to best fit your needs. With multiple setting times, varying degrees of hardness, a variety of color options and both liquid and thixotropic forms, we're sure to find the solution to best fit your model and mold making needs.

Contact R&R to discuss your RTV2 silicone rubber requirements today!

800.253.4502 ext. 41210  
marti.hunyor@dentsply.com  
www.ransom-randolph.com



## Meet the Team

Deanna Lett-Davis joined the R&R team in February 1997. In her current role as Customer Service Representative, Deanna processes orders received via phone, fax, web store and email.

She assists customers with shipping issues, returns and much more.

Deanna has extensive

experience in the customer service industry, having held various customer service positions prior to joining R&R.

She takes joy in learning interesting things about those around her. Deanna's favorite quote is "Even a broken clock is correct twice a day."



**Deanna Lett-Davis**  
Customer Service Rep



3535 Briarfield Boulevard  
 Maumee, OH 43537  
 US Toll Free 800.253.4502  
 Phone 419.865.9497  
 Fax 419.865.9777

*Investing with Innovation™*

We're on the web!  
[www.ransom-randolph.com](http://www.ransom-randolph.com)

Ransom & Randolph is dedicated to advancing the investment casting industry. R&R has provided foundries with innovative product technology, process knowledge and technical expertise since the 1800s. By coupling revolutionary product developments with experienced staff, manufacturing and warehousing facilities, R&R successfully helps customers become casting industry leaders. R&R is an operating division of DENTSPLY (NASDAQ: XRAY).

R&R's core businesses are composed of Ceramic Shell, Industrial Mold, Jewelry and Dental Investment Casting.

R&R takes great pride in providing customers with a pleasant procurement experience. R&R's Maumee, Ohio based Customer Service team services North America and US export customers. Our UK-based agent, HTM Tradeco, Ltd., provides service for the European Union. From initial order placement through delivery, R&R's Customer Service team takes responsibility for accurate and efficient processing of your material needs. As a result, R&R's Customer Service team is unmatched in the industry.



**Interested in receiving your copy  
of Casting Connection via email?**

Let us know! Send an email to:  
[Alisa.Rawski@dentsply.com](mailto:Alisa.Rawski@dentsply.com)



## R&R Who To Call

### Technical Team

#### Ceramic Shell Application Questions

- Conrad Holek  
419.794.1228  
[Conrad.Holek@dentsply.com](mailto:Conrad.Holek@dentsply.com)
- Dave Berta  
419.794.1251  
[Dave.Berta@dentsply.com](mailto:Dave.Berta@dentsply.com)
- Zach Feffer  
419.794.1254  
[Zachary.Feffer@dentsply.com](mailto:Zachary.Feffer@dentsply.com)

#### Slurry Test Results

- Gary Oancea  
419.794.1240  
[Gary.Oancea@dentsply.com](mailto:Gary.Oancea@dentsply.com)

#### Jewelry & Industrial Mold Application Questions

- Mike Stover  
419.794.1239  
[Mike.Stover@dentsply.com](mailto:Mike.Stover@dentsply.com)

### Sales Team

#### Sales Manager

- Scott Todd  
419.794.1226  
[Scott.Todd@dentsply.com](mailto:Scott.Todd@dentsply.com)

#### West Coast Sales

- Dan Wheeler  
[Dan.Wheeler@dentsply.com](mailto:Dan.Wheeler@dentsply.com)

#### Midwest Sales

- Wendell Welsch  
[Wendell.Welsch@dentsply.com](mailto:Wendell.Welsch@dentsply.com)

#### East Coast Sales

- Jeff Jones  
[Jeff.Jones@dentsply.com](mailto:Jeff.Jones@dentsply.com)

#### Equipment Questions

- Marti Hunyor  
419.794.1210  
[Marti.Hunyor@dentsply.com](mailto:Marti.Hunyor@dentsply.com)

### Customer Service Team

- Deanna Lett-Davis  
419.794.1274  
[Deanna.Lett-Davis@dentsply.com](mailto:Deanna.Lett-Davis@dentsply.com)
- Leslie Danks  
419.794.1234  
[Leslie.Danks@dentsply.com](mailto:Leslie.Danks@dentsply.com)

### Accounts Receivable Team

- Mickey Pantoja  
419.794.1214  
[Mickey.Pantoja@dentsply.com](mailto:Mickey.Pantoja@dentsply.com)

### Ransom & Randolph

- 3535 Briarfield Boulevard  
Maumee, Ohio 43537  
US Toll Free 800.253.4502  
Phone 419.865.9497  
Fax 419.865.9997  
[www.ransom-randolph.com](http://www.ransom-randolph.com)



*Investing with Innovation™*